

MIDWEST PRIME AKAUSHI
SPRING TIME
Spectacular
PRODUCTION SALE

May 7, 2026 • 7 p.m. CDT

Live Online Only Sale Hosted by: *LiveAg*

SELLING 43 LOTS

- 1 Heifer Pregnancy
- 1 Choice of 3 ET Heifers
- 3 Embryo Packages
- 4 Semen Lots
- 9 Cow-Calf Pairs
- 3 Bred Females
- 8 Open Heifers
- 14 Bulls





Dear Friends and Valued Partners,

At Midwest Prime Akaushi, we've built everything around pride in the breed and a singular commitment: outstanding beef. From day one we honored the foundation genetics that define Akaushi — the temperament, hardiness, marbling and efficiency that made this breed exceptional. Those bloodlines are the backbone of our herd and the standard by which we measure every breeding decision.

At the same time, we've been deliberate about progress. We've introduced carefully selected, elite genetics to complement our foundation stock — never to replace it. Those additions were chosen to enhance traits that matter most to consumers and chefs: consistent marbling, improved feed efficiency, sound structure and predictable growth. Each mating is planned to retain the breed's core attributes while elevating performance where it counts.

Why do we balance tradition with selective improvement? Because, ultimately, it's all about the meat. Genetics are a tool to deliver a better eating experience — more flavor, tender texture and reliable quality from animal to plate. We focus on measurable, practical outcomes: cattle that perform on pasture and in the feedlot, harvest characteristics that drive value, and, most importantly, a product that delights the people who eat it.

We remain stewards of the Akaushi breed's legacy. By protecting foundation genetics and layering elite traits intentionally, we honor the past and responsibly invest in the future — ensuring every cut from our ranch reflects the best of what Akaushi can be.

Thank you for your continued support and interest in our program.

Sincerely,
Mark Byler and Jason Miller

RANCH LOCATION

3295 Northeast State Highway D, Weatherby, Missouri 64497

Sale cattle are available for viewing prior to the sale. Feel free to call the Ranch to make an appointment: Mark Byler 816.649.8272, Jason Miller 740.541.7475

This auction is the next step in Midwest Prime Akaushi's journey to being a leading seedstock producer, and will expand our cattle to a larger market. We are joining our forces with LiveAg to continue to build the market for Akaushi genetics.

AUCTIONEER

Jason Miller 740.541.7475

SALE DAY PHONES

Mark Byler 816.649.8272
info@midwestprimeakaushi.com

Jason Miller 740.541.7475

Randall O. Ratliff 615.330.2735
randy@wagyu365.com

Kiley McKinna 402.350.3447
kiley@wagyu365.com

PJ Budler 682.597.0380
pj@wagyu365.com

SALE ORDER & SUPPLEMENTAL INFORMATION

Sale order is catalog order. Any additional information or corrections to the printed sale catalog will be available online at www.Wagyu365.com and <https://bid.live-ag.com/>

WATCH LIVE & BID ONLINE

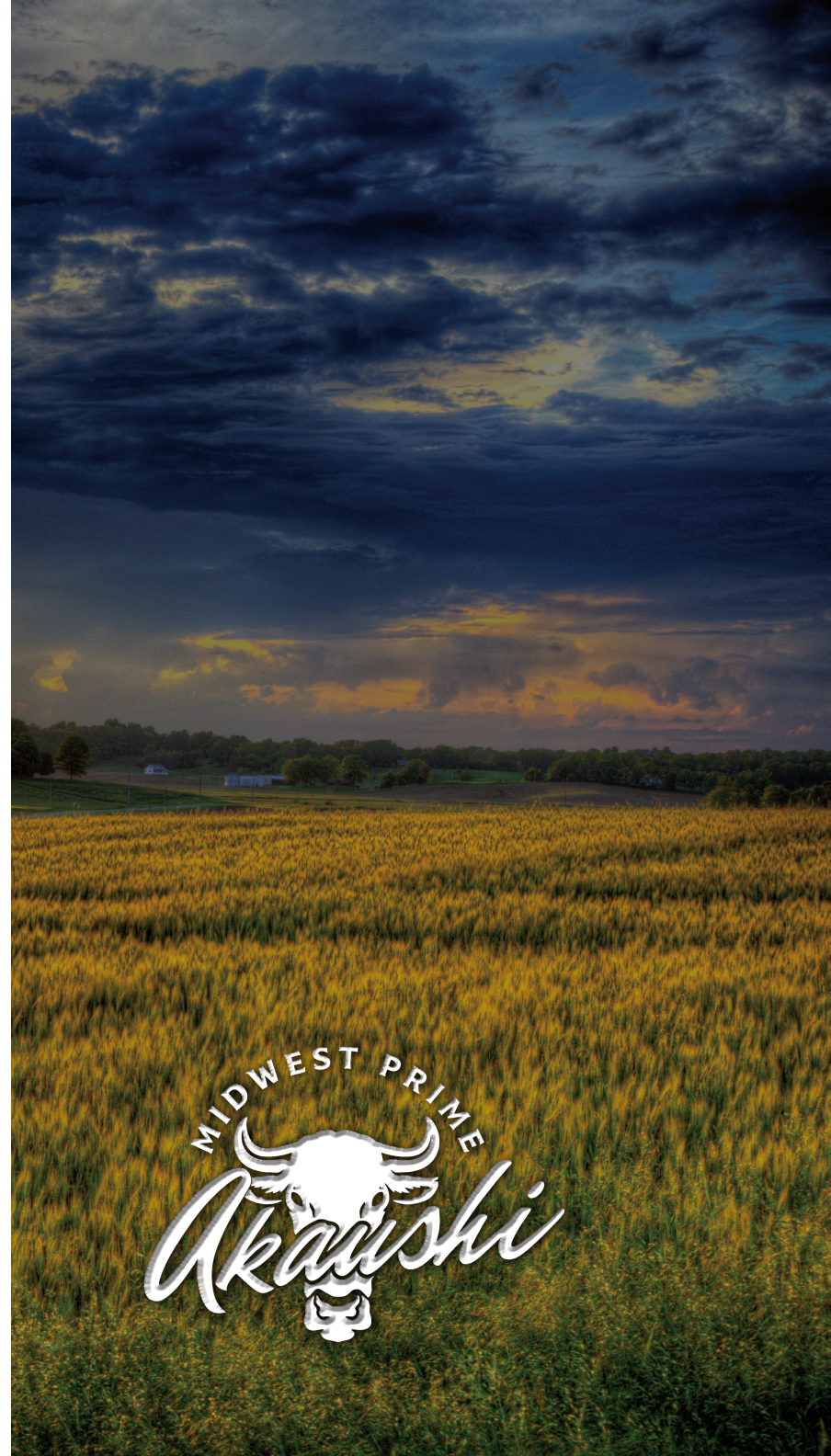
We have made preparations to bid and buy livestock through LiveAg's bidding platform. For those unable to attend in person on sale day, note that all lots in the sale will be available for viewing online prior to sale day at: <https://bid.live-ag.com/> If you need assistance with registration or with either bidding platform, call LiveAg at 817.533.6699

MANAGEMENT

Auction money and proceeds will be conducted under Randall O. Ratliff, DBA R&R Marketing, P.O. Box 60097, Nashville, TN 37206 Bond # 7901027402 (U.S. Department of Agriculture, Grain Inspection, Packers and Stockyards Administration Packers & Stockyards Program)



Mark Byler, 816.649.8272
Jason Miller, 740.541.7475
3295 Northeast State Highway D
Weatherby, MO 64497
info@midwestprimeakaushi.com
www.midwestprimeakaushi.com





REGISTRATION & TRANSFERS

As soon as the cattle are paid for, the cattle sold will be transferred (registrations) to the new owners through the offices of the American Akaushi Association and American Wagyu Association. The fee is paid for by the seller.

PAYMENT

All lots must be paid for immediately following the conclusion of the Midwest Prime Akaushi Spring Time Spectacular Production Sale, unless prior payment arrangements have been made with any representative of Wagyu365. Buyers are welcome to pay by credit card. If so, you will be charged a 3% fee on the total sum of your purchase.

TRUCKING

Contact any team member of Wagyu365 for their assistance with your trucking needs.

HEALTH PAPERS

All cattle sold will be accompanied by appropriate health papers for immediate intrastate shipment. Additional health testing may be required for interstate shipment.

LIVESTOCK MORTALITY INSURANCE

Any representative of the Wagyu365 team can assist any buyer with insurance regarding their purchases.

TERMS & CONDITIONS

Cattle will be sold under the Standard Terms and Conditions of the American Akaushi Association and American Wagyu Association. Please log onto www.Akaushi.com or <https://wagyu.org/>

GENETIC CONDITIONS

Log onto www.Akaushi.com or <https://wagyu.org/> and go to the animal search and any available results of the genetic testing will be found on the lot selling.

MIDWEST PRIME AKAUSHI WANTS TO MAKE YOUR BUYING EXPERIENCE ENJOYABLE AND CONVENIENT

- 1. CALL US IN ADVANCE** This old-school way is still alive and well at Midwest Prime Akaushi. When your schedule or travel plans make it impossible to join us, please take a quick moment and give us a call at 816.649.8272 or 740.541.7475 or call any of the folks listed on sale day contacts or sale management. We are all here to help you. We can visit about the cattle that interest you and, if you'd like, we can even offer an opinion. In other words, please share with us what you would like to do and we will arrange it per your instructions. We will make it simple to accept your max bid on lots you are interested in buying.
- 2. REAL-TIME PHONE BIDS** Not quite as old-school as calling us in advance of sale day but still a tried and true method of buying cattle, particularly if you don't have reliable high-speed internet. You may call LiveAg at 817.533.6699 or any of the sale day phones.
- 3. ONLINE BIDS** Technology does have its advantages and it's pretty cool. We aim to be on the cutting edge of all technology, allowing us to better serve you. If you have high-speed internet, may we suggest the online bidding platforms of <https://bid.live-ag.com/>
- 4. CONVENIENCE FEE** Midwest Prime Akaushi will be charging a 3% Convenience Processing Fee for any credit/debit card transactions, as well as quickbooks payments, for cattle and/or genetics.

LiveAg Join the sale,
FROM ANYWHERE.

This sale will be broadcast live through LiveAg.

REGISTER BEFORE SALE DAY:

- 1.** Visit bid.live-ag.com (scan the code)
- 2.** Create an account or log in
- 3.** Register to bid before sale day by requesting a buyer number for this sale





RANDALL O. RATLIFF
SALES REPRESENTATIVE
615.330.2735 | Randy@wagyu365.com



KILEY MCKINNA
SALES REPRESENTATIVE
402.350.3447 | Kiley@wagyu365.com



AMY SHAW
CUSTOMER RELATIONS
214.554.8223 | Amy@wagyu365.com



P.J. BUDLER
INTERNATIONAL AFFAIRS
682.597.0380 | PJ@wagyu365



WILEY FANTA
CUSTOMER RELATIONS
320.287.0751 | Wiley@wagyu365.com



ABBY LANE
OFFICE MANAGEMENT
919.618.8098 | Abby@wagyu365.com



CLAIRE BROWN
CUSTOMER RELATIONS
765.404.8458 | Claire@wagyu365.com

CONNECT WITH US FOLLOW WAGYU365 ON SOCIAL MEDIA ~
#Wagymarketingatitsfinest #24/7/365Wagyu
#alldayeverydaywagyu



@Wagyu365



TWA KOTSUKARI • Sire of Lot 1



RMW HOSHICO D18 • Dam of Lot 1



FULLBLOOD AKAUSHI • COW • RED
HORNED

HEIFER PREGNANCY

HIKARI
TWA KOTSUKARI (AF6818)
AKIKO

JC RUESHAW 75
RMW HOSHICO D18 (EAF243983)
AKAHOSHI

DAI-JU 10 MITSUMARU KO 76
KAZUTOMO 1KYU 92958
NAMIMARU KO 74
MITSUKO TOKKYU 9639
RUESHAW 430
JC MS UMEMARU 30
KALANGA RED STAR C402
KALANGA KAJIMIKO B647

- There is a limited supply of Kotsukari semen and no more is available to be imported into the USA.

Due 6.30.26 - Black Commercial Recipient

- Midwest Prime holds exclusive rights to this mating and there is an extremely limited number of animals available. We are the only breeder to produce females by the Kotsukari × Hoshiko D18 cross and this will be the only opportunity to buy any of those.
- Kotsukari is a Hikari son directly out of Akiko herself and universally considered to be one of the greatest Australian sires of all time.
- The donor dam was purchased for \$104,000 — the highest price ever paid for an Akaushi cow at auction. Her sire sold for \$500,000. D18 combines outstanding marbling, size, fertility and maternal traits.
- Hoshiko D18 descends from the incredible Namiko maternal line.
- Namiko is the maternal granddam of Virile and F X014.
- The pregnancy has a fantastic sire stack of Kotsukari x Rueshaw 75 x Kalanga Red Star x Kajikari x Big Al.
- This is the pinnacle of Akaushi genetics and a very unique opportunity to position yourself at the forefront of the Akaushi breed.





RAPID BAY JOJO ET • Dam of Lot 2

FULLBLOOD AKAUSHI • COW • RED
AF329454 • HORNED • 9/16/2023 • MPA M22

MPA 22 ET

RUESHAW 430

GK4 RUESHAMARU
KAEDEMARU 2

TWA KOTSUKARI

RAPID BAY JOJO ET
RAPID BAY AKACHAN

RUEMEI H39

FB2 KIKUTAMA 14285

TAMAMARU
KAEDEMARU

HIKARI

AKIKO

ASHWOOD PARK VIRILE

IWG MS JUDO 73Z

- Lot 2A:** MPA 65, heifer born 4/3/26, sired by AF247838, HeartBrand 7133K (Rueshaw x Heartbrand Kate 662Z x Heartbrand Joe).
- MPA 22 is a daughter of the well-bred GK4 Rueshamaru, a Rueshaw son of Kaedemaru.
 - Next two sires on maternal side are Australian standouts Kotsukari and Virile.
 - Maternal line is the extremely potent Akiko.
 - Popular and productive Australian import female Gabni Rubi highlights the pedigree.
 - Very deep, strong sire stack of Rueshamaru x Kotsukari x Virile x Judo x Shigemaru x Big Al x Tamamaru x Namimaru.
 - This female is at the top of the genetic Pyramid!





HEARTBRAND 3117A ET • Dam of Lot 3

SPRING PAIR



FULLBLOOD AKAUSHI • COW • RED
AF329452 • HORNED • 7/17/2023 • MPA M24

MPA 24 ET

WSI UMEMARU
SOR MR HIROMITSU 1090D
KAEDEMARU 2

RUESHAW 430
HEARTBRAND 3117A ET
HEARTBRAND B1815P

HIKARI
KAEDEMARU
TAMAMARU
KAEDEMARU
RUEMEI H39
FB2 KIKUTAMA 14285
BIG AL
FUYUKO

Will calve by sale day to AF247838, HeartBrand 7133K (Rueshaw x HeartBrand Kate 662Z (HeartBrand Joe)).

- Sired by the very popular Hiromitsu, an Umemaru son of Kaedemaru.
- Maternal grandsire one of the original imports, Rueshaw.
- The maternal line traces to the popular and proven Fuyuko.
- Solid sire stack of proven bulls Hiromitsu x Rueshaw x Big Al x Dai 3 Mitsumaru.
- Lots of breeding options with this pedigree.
- This young female will prove herself to be a highly profitable investment.





MPA RAPID BAY NATSUKI 01D ET • Dam of Lot 4

FULLBLOOD WAYGU • COW • RED
 FB130770 • HORNED • 8/19/2024 • MPA M121

MPA M121 ET

HIKARI
HEARTBRAND 518
 DAI 8 MARUNAMI J19461

TWA KOTSUKARI
MPA RAPID BAY NATSUKI 01D ET
 IWG MS JUDO 73Z

DAI 10 MITSUMARU
 KAZUTOMO 92958
 DAI 3 MITSUMARU 30
 DAI 7 MARUNAMI J14289
 HIKARI
 AKIKO
 JUDO
 GABNI RUBI

Sells Open

- M121 is a powerful, front pasture daughter of the beautiful Natsuki, a daughter herself of TWA Kotsukari.
- M121 is sired by Heartbrand 518, who is a Hikari son of the great Dai 8 Marunami.
- Her maternal line traces to the incredible foundation cow Akiko.
- Fantastic sire stack of Kotsukari x Judo x Shigemaru x Big AI x Tamamaru x Namimaru!
- This maternal line consistently makes the great ones.
- Big genetic opportunity with this heifer!





THE WRIGHT WAGYU MASTER CHEF E146 • Sire of Lot 5

OPEN HEIFER



FULLBLOOD WAYGU • COW • RED
FB119700 • HORNED • 9/30/2024 • MPA 137M

MPA 137M ET

TWA KAJIKARI
THE WRIGHT WAGYU MASTER CHEF E146
KALANGA SHIGEHOMARE B234

RUESHAW II
D&H D&H MS RUESHAW 98-2 6020D ET
IWG MS RUBI 98

HIKARI
UME
SHIGEMARU
KALANGA HIKAHOMARE VW36
RUESHAW
JC MS UMEMARU 30
KALANGA RED STAR
GABNI RUBI

Sells Open

- Master Chef daughter!
- Master Chef genetics are highly sought after and here is an awesome daughter!
- The maternal line of 137M is the breed-leading Akiko line.
- Elite sire stack of Master Chef x Rueshaw II x Kalanga Red Star x Shigemaru x Big Al x Tamamaru.
- Pedigree traces to the great Gabni Rubi, who was imported as a heifer from Australia.
- Very high ceiling with the potential of this heifer!





FULLBLOOD WAYGU • COW • RED
 FB130773 • HORNED • 8/20/2024 • MPA M124

MPA M124 ET

DAI 2 SHIGENAMI
SHIGEMARU
 DAI YON AKIBARE 3357

IWG UMEMARU 69Z
SCHARDT - MS UMEMARU 15
 COATES TAIYO

JAPANESE BULL (RED)
 JAPANESE COW (RED)
 DAI 10 SHIGEKAWA 65
 DAI NI AKIBARE 53244

WSI UMEMARU
 JVP 702 HOMARE-27
 HB BIG AL 502
 TWA MUTSUNAMI

Sells Open

- A Shigemaru daughter!
- M124 has a performance loaded pedigree.
- She is from the highly proven Dai 8 Marunami maternal line.
- Her sire stack is Shigemaru x IWG Umemaru 69Z x Big Al x Shigemaru.
- Her granddam, Coates Taiyo, was a live import from Australia from the Simon Coates herd.
- Loads of potential with this heifer and many breeding options!



FULLBLOOD WAYGU • COW • RED
 FB130771 • HORNED • 8/23/2024 • MPA M122

MPA M122 ET

DAI 2 SHIGENAMI
SHIGEMARU
 DAI YON AKIBARE 3357

IWG UMEMARU 69Z
SCHARDT - MS UMEMARU 15
 COATES TAIYO

JAPANESE BULL (RED)
 JAPANESE COW (RED)
 DAI 10 SHIGEKAWA 65
 DAI NI AKIBARE 53244

WSI UMEMARU
 JVP 702 HOMARE-27
 HB BIG AL 502
 TWA MUTSUNAMI

Sells Open

- M122 has a performance loaded pedigree.
- She is a daughter of the foundation sire Shigemaru.
- She is from the highly proven Dai 8 Marunami maternal line.
- Powerful sire stack is Shigemaru x IWG Umemaru 69Z x Big Al x Shigemaru.
- Her granddam, Coates Taiyo, was a live import from Australia from the Simon Coates herd.
- Excellent genetic investment opportunity.





BSCC MS BIG AL E244 • Dam of Lot 8

OPEN HEIFER



FULLBLOOD WAYGU • COW • RED
 FB130777 • HORNED • 9/30/2024 • MPA M118

MPA M118

TAMAMARU

DAI GO TAMANAMI 96
 DAI 8 MARUNAMI J19461

BSCC MS BIG AL E244

HB BIG AL 502
 SOR JUDO DESTINY

TAMANAMI 70
 FUJIMITSU 2030
 DAI 3 MITSUMARU 30
 DAI 7 MARUNAMI J14289
 DAI 10 MITSUMARU
 AKIKO
 JUDO
 803 ID

Sells Open

- Dream pedigree in this outstanding pedigree!
- Sired by Tamamaru, who is a son of the famous Dai 8 Marunami cow.
- The maternal line is the impressive JVP Homare bloodline.
- Big-time sire stack of Tamamaru x Big Al x Judo x Shigemaru x Hikari x Judo x Namimaru.
- One of the best Akaushi offerings you will ever find.
- This heifer has a spectacular future ahead of her!





FULLBLOOD AKAUSHI • COW • RED
AF380112 • HORNED • 9/6/2024 • MPA M133

MPA 133

TAMAMARU
DAI-GO 5 TAMANAMI TOKKYU 96
DAI-HACHI 8 MARUNAMI

HEARTBRAND RHUBARB 2142A ET
ACE MS PRIME CUT RHUB 047 ET
MCC 754Y

TAMANAMI KO 70
FUJIMITSU KO 2030
DAI-SAN 3 MITSUMARU KO 71
DAI-HICHI 7 MARUNAMI TOK 14289
RUESHAW 430
HEARTBRAND BARBARA B3518R
TAMAMARU
HEARTBRAND S1754P

Sells Open

- MPA 133 is a rare young female from foundation sire Tamamaru.
- The maternal grandsire is the popular and proven Rhubarb.
- Ume highlights the bottom side of this strong pedigree.
- The sire stack is all proven sires.
- Tamamaru x Rhubarb x Tamamaru x Shigemaru supply the bull power.
- 133 is a great breeding piece.



FULLBLOOD AKAUSHI • COW • RED
AF365504 • HORNED • 9/2/2024 • MPA M128

MPA 128 ET

TAMAMARU
DAI-GO 5 TAMANAMI TOKKYU 96
DAI-HACHI 8 MARUNAMI

HEARTBRAND RHUBARB 2142A ET
ACE MS PRIME CUT RHUB 047 ET
MCC 754Y

TAMANAMI KO 70
FUJIMITSU KO 2030
DAI-SAN 3 MITSUMARU KO 71
DAI-HICHI 7 MARUNAMI TOK 14289
RUESHAW 430
HEARTBRAND BARBARA B3518R
TAMAMARU
HEARTBRAND S1754P

Sells Open

- MPA 128 is a rare daughter of foundation sire Tamamaru.
- The maternal grandsire is the popular and proven Rhubarb.
- Ume is the highlight female of this maternal line.
- The sire stack is all proven sires — Tamamaru x Rhubarb x Tamamaru x Shigemaru.
- 128 is a great breeding piece.





HB BIG AL 502 • Sire of Lot 11

DONOR PROSPECT



FULLBLOOD WAGYU • COW • RED
 FB140102 • HORNED • 09.16.23 • MPA M27L

MPA M27L ET

DAI 10 MITSUMARU
HB BIG AL 502
 AKIKO

HB BIG AL 502
BMR BMR MS RUESHAW 1046H ET
 JC MS RUEHAW 121

DAI 2 MITSUMARU
 GODAI
 NAMIMARU
 MITSUKO B 9639
 DAI 10 MITSUMARU
 AKIKO
 RUESHAW
 JC MS HIKARI 40

Sells open and ready to flush.

- Sired by the legendary King of the Breed – Big Al.
- M27L is double bred to Big Al.
- The maternal grandsire is original import Rueshaw!
- Proven maternal line of JVP Homare.
- Impeccable sire stack of Big Al x Big Al x Rueshaw x Hikari x Judo x Namimaru.
- M27L can be flushed/bred to a wide variety of bulls.
- This female has an amazing, highly profitable future!





HEARTBRAND HEAVY HAULER 3199A • Sire of Lot 12

FULLBLOOD AKAUSHI • COW • RED
AF359458 • HORNED • 3/31/2024 • 71

LITTLEFIELD 71

Sells Open

- Here is a Heavy Hauler daughter!
- Her maternal grandsire is El Jefe.
- The powerful Ume anchors the bottom side of the pedigree.
- Super line-up of Heavy Hauler x El Jefe x Rueshaw x Shigemaru x Shigemaru.
- his is a great herd-building investment opportunity!

Consigned by Wade Littlefield



HEARTBRAND CHARLIE C4037S
HEARTBRAND HEAVY HAULER 3199A
HEARTBRAND V7494U

HEARTBRAND EL JEFE 2019A
HEARTBRAND 8701D
HEARTBRAND 2100A ET

HEARTBRAND H0518E
HEARTBRAND S0917J
HEARTBRAND H2460R
HEARTBRAND T1929P
HEARTBRAND B3485R
HEARTBRAND SHELLI V7413U
RUESHAW 430
HEARTBRAND JONIE V7341U



SOR HASTINGS 1066C ET • Sire of Lot 13



FULLBLOOD AKAUSHI • COW • RED
AF359451 • HORNED • 3/31/2024 • 749

LITTLEFIELD 749

BIG AL
SOR HASTINGS 1066C ET
KAEDEMARU 2

HEARTBRAND EL JEFE 2019A
HEARTBRAND 8701D
HEARTBRAND 2100A ET

DAI-JU 10 MITSUMARU KO 76
AKIKO
TAMAMARU
KAEDEMARU
HEARTBRAND B3485R
HEARTBRAND SHELLI V7413U
RUESHAW 430
HEARTBRAND JONIE V7341U

Will calve by sale day to AF272164, LAG 1106K (HeartBrand Phoenix x WSI Umermaru x Kaedemaru) or AF247838, HeartBrand 7133K (Rueshaw x HeartBrand Kate 662Z (HeartBrand Joe)).

- 749 is a daughter of the well-known Hastings, a son of Big Al x Kaedemaru.
- The powerful Ume is the anchor female of this great line.
- Look at the sires — Hastings x El Jefe x Rueshaw x Shigemaru x Shigemaru.
- This is a great pedigree to start a high performing line in your herd.
- Take advantage of this outstanding opportunity.

Consigned by Wade Littlefield





FULLBLOOD AKAUSHI • COW • RED
AF380107 • HORNED • 9/29/2023 • MPA M71

MPA 71 ET

JUDO 1223
HEARTBRAND J-PRIME 2132A
HEARTBRAND V5909S

HEARTBRAND 327Y
HEARTBRAND 7185D
HEARTBRAND 8990X

SHIGETAKARA H 40
SAKAE RK23331
HEARTBRAND C0600N
HEARTBRAND T1033P
HEARTBRAND B4183S
HEARTBRAND H2494R
SHIGEMARU
HEARTBRAND V5918T

Lot 14A: MPA 62, commercial heifer born 2/14/26, sired by 3/4 Akaushi bull.

- The sire of MPA 71 is the proven and popular Heartbrand J-Prime.
- Her dam is a daughter of Heartbrand 327, a Big Al grandson.
- The maternal line traces directly to brood cow Himawari.
- Heartbrand breeding is the foundation of this pedigree.
- The sire stack is rock solid with Judo x Shigemaru x Big Al x Heartbrand T1033P x Tamamaru x H0518E.
- MPA 71 will be a strong addition to any herd.



FULLBLOOD AKAUSHI • COW • RED
AF380111 • HORNED • 11/9/2022 • MPA M70

MPA 70 ET

SHIGEMARU
LAG 1105D ET
KAEDEMARU 2

RED EMPEROR
TR MS RED EMPEROR 6502D ET
UKB MS HOMARE SHIGE M30E

DAI-NI 2 SHIGENAMI TOKKYU 27
DAI-YON 4 AKIBARE TOKKYU 3357
TAMAMARU
KAEDEMARU
BIG AL
DAI-HACHI 8 MARUNAMI
UKB MR SHIGEMARU/803
JVP MS HOMARE J 30E

Will calve by sale day to AF165511, Dutton Cattle 3492F/118 (SOR Hastings 1066C x Shigamaru daughter).

- MPA 70 is by LAG 1105D, a Shigemaru son of the great Kaedemaru.
- Her dam is a daughter of the popular Red Emperor.
- The sire pathway is loaded beyond that with Kalanga Red Star x Shigemaru x Hikari x Judo.
- The JVP Homare bloodline anchors the bottom side of the pedigree.
- This is a well-bred two-year-old with a big future.





FULLBLOOD AKAUSHI • COW • RED
AF329466 • HORNED • 3/23/2024 • MPA M102

MPA MS JUDO ET

SHIGETAKARA H 40
JUDO 1223
SAKAE RK23331

BIG AL
LAG 2208G
HEARTBRAND RHEA 3119A ET

SHIGETAMA H 11
TAKARA 3 22765
MARUZONO F252
KAME RK4370
DAI-JU 10 MITSUMARU KO 76
AKIKO
RUESHAW 430
HEARTBRAND B1815P

Lot 16A: MPA 61, bull born 2/2/26, sired by AF247838,
Heartbrand 7133K ET.

- Here is a young Judo daughter!
- This is a truly foundation-built pedigree.
- The sire stack is Judo x Big Al x Rueshaw x Big Al.
- Fuyuko is the base cow of the maternal line.
- There are a ton of breeding options in the future with this two year old.
- Invest in this rare genetic package



FULLBLOOD AKAUSHI • COW • RED
AF329464 • HORNED • 3/27/2024 • MPA M105

MPA 105 ET

ASHWOOD PARK VIRILE
RAPID BAY BLUE CHIP ET
RAPID BAY ASUKA

TAMAMARU
MCC 754Y
HEARTBRAND S1754P

SHIGEMARU
TWA MEKATA
TWA KOTSUKARI
IWG MS JUDO 73Z
DAI-GO 5 TAMANAMI TOKKYU 96
DAI-HACHI 8 MARUNAMI
SHIGEMARU
UME

Will calve by sale day.

Al'd to AF178808, LAG Shinjitsu 2263G (WSI Umemaru x Shigemaru x Akiko).

PE'd to AF247838, HeartBrand 7133K (Rueshaw x HeartBrand Kate 662Z x HeartBrand Joe).

- MPA 105 is daughter of the increasingly popular Blue Chip.
- This is a special female offering from the powerful Ume maternal line.
- This two-year-old combines a new, young sire with foundation sires.



HEARTBRAND JOE S5394S • Sire of Lot 18

FULLBLOOD AKAUSHI • COW • RED
AF380110 • HORNED • 10/9/2023 • MPA M75

MPA 75 ET

PE'd 4.01.26 until sale day to FB130767, MPA M123 ET (Tamamaru x TWA Kotsukari x IWG Ms Judo 73Z).

- MPA 75 is a daughter of the heavily used, tremendous cow sire, Heartbrand Joe.
- Her dam is sired by Heartbrand El Jefe.
- Himawari is the maternal foundation cow of the pedigree.
- The sire stack is high-powered with Joe x El Jefe x H0518E x Heartbrand T3970S x Shigemaru x Big Al.
- This is a young cow with a big future.



SHIGEMARU
HEARTBRAND JOE S5394S
HEARTBRAND B0004M

HEARTBRAND EL JEFE 2019A
HEARTBRAND 0104E
HEARTBRAND 1972A

DAI-NI 2 SHIGENAMI TOKKYU 27
DAI-YON 4 AKIBARE TOKKYU 3357
BIG AL
FUYUKO
HEARTBRAND B3485R
HEARTBRAND SHELLI V7413U
HEARTBRAND H0518E
HEARTBRAND 9237X



FULLBLOOD AKAUSHI • COW • RED
AF380108 • HORNED • 8/24/2023 • MPA M74

MPA 74 ET

SHIGEMARU
HEARTBRAND JOE S5394S
HEARTBRAND B0004M

HEARTBRAND EL JEFE 2019A
HEARTBRAND 0104E
HEARTBRAND 1972A

DAI-NI 2 SHIGENAMI TOKKYU 27
DAI-YON 4 AKIBARE TOKKYU 3357
BIG AL
FUYUKO
HEARTBRAND B3485R
HEARTBRAND SHELLI V7413U
HEARTBRAND H0518E
HEARTBRAND 9237X

PE'd 4.01.26 until sale day to FB130767, MPA M123 ET (Tamamaru x TWA Kotsukari x IWG Ms Judo 73Z).

- MPA 74 is a daughter of the heavily used cow sire, Heartbrand Joe.
- Her dam is sired by Heartbrand El Jefe.
- The maternal foundation cow of the pedigree is Himawari.
- The sire stack is high-powered with Joe x El Jefe x H0518E x Heartbrand T3970S x Shigemaru x Big Al.
- There is a bright future ahead of this young cow.



FULLBLOOD AKAUSHI • COW • RED
AF380109 • HORNED • 10/10/2023 • MPA M73

MPA 73 ET

SHIGEMARU
HEARTBRAND JOE S5394S
HEARTBRAND B0004M

HEARTBRAND EL JEFE 2019A
HEARTBRAND 0104E
HEARTBRAND 1972A

DAI-NI 2 SHIGENAMI TOKKYU 27
DAI-YON 4 AKIBARE TOKKYU 3357
BIG AL
FUYUKO
HEARTBRAND B3485R
HEARTBRAND SHELLI V7413U
HEARTBRAND H0518E
HEARTBRAND 9237X

PE'd 4.01.26 until sale day FB130767, MPA M123 ET (Tamamaru x TWA Kotsukari x IWG Ms Judo 73Z).

- Sired by the popular and proven Heartbrand sire, Heartbrand Joe.
- Maternal grandsire is Heartbrand El Jefe.
- Generations of Heartbrand breeding in this pedigree.
- Heartbrand Himawari is the foundation cow on the maternal side.
- Pedigree has heavy influence of Big Al, Hikari, Shigemaru and Tamamaru.



RAPID BAY NATSUKI ET • Dam of Lots 21A, 21B & 21C

FULLBLOOD AKAUSHI • COW • RED
 PENDING • HORNED • 10/14/2025 • MPA M53



MPA M53 ET

TWA KAJIKARI
 THE WRIGHT WAGYU MASTER CHEF E146 (EAF142713)
 KALANGA SHIGEHOMARE B234

TWA KOTSUKARI
RAPID BAY NATSUKI ET (AF172833)
 IWG MS JUDO 73Z

HIKARI
 UME
 SHIGEMARU
 KALANGA HIKAHOMARE VW36
 HIKARI
 AKIKO
 JUDO 1223
 GABNI RUBI

Pick at weaning — approximately May/June.

- Heifers are sired by the high performing Master Chef.
- Master Chef is the elite performance Australian bull that crosses Kajikari with the Homare line.
- Dam of the heifers is Natsuki, the outstanding Kotsukari daughter of IWG MS Judo 73Z.
- Natsuki boasts an amazing pedigree going back to the legend herself, Akiko.
- The sire stack is formidable with Master Chef x Kotsukari x Judo x Shigemaru x Big Al x Tamamaru x Namimaru.
- Any of these heifers will be game changers wherever they go.
- Set your herd up forever!



THE WRIGHT WAGYU MASTER CHEF E146 • Sire of Lots 21A, 21B & 21C

CHOICE OF 3 ET HEIFERS



FULLBLOOD AKAUSHI • COW • RED
 PENDING • HORNED • 10/12/2025 • MPA M51

MPA M51 ET

TWA KAJIKARI
 THE WRIGHT WAGYU MASTER CHEF E146 (EAF142713)
 KALANGA SHIGEHOMARE B234

TWA KOTSUKARI
 RAPID BAY NATSUKI ET (AF172833)
 IWG MS JUDO 73Z

HIKARI
 UME
 SHIGEMARU
 KALANGA HIKAHOMARE VW36

HIKARI
 AKIKO
 JUDO 1223
 GABNI RUBI



FULLBLOOD AKAUSHI • COW • RED
 PENDING • HORNED • 10/24/2025 • MPA M56

MPA M56 ET

TWA KAJIKARI
 THE WRIGHT WAGYU MASTER CHEF E146 (EAF142713)
 KALANGA SHIGEHOMARE B234

TWA KOTSUKARI
 RAPID BAY NATSUKI ET (AF172833)
 IWG MS JUDO 73Z

HIKARI
 UME
 SHIGEMARU
 KALANGA HIKAHOMARE VW36

HIKARI
 AKIKO
 JUDO 1223
 GABNI RUBI





ASHWOOD PARK VIRILE • Sire of Lot 22



RAPID BAY NATSUKI ET • Dam of Lot 22

FULLBLOOD AKAUSHI • COW • RED
HORNED



3 IVF SEXED HEIFER EMBRYOS

SHIGEMARU
ASHWOOD PARK VIRILE (EAF124670)
TWA MEKATA

TWA KOTSUKARI
RAPID BAY NATSUKI ET (AF172833)
IWG MS JUDO 73Z

DAI-NI 2 SHIGENAMI TOKKYU 27
DAI-YON 4 AKIBARE TOKKYU 3357
HIKARI
NAMIKO
HIKARI
AKIKO
JUDO 1223
GABNI RUBI

Guaranteed 1 pregnancy if put in by a certified technician.
Stored at Trans Ova, Fort Scott, KS.

- Smashing genetic package and opportunity!
- Embryos sired by Virile, the Shigemaru sired maternal grandson of Namiko.
- Virile is a maternal brother to the knockout sire F X014.
- Dam of the embryos is Natsuki, the outstanding Kotsukari daughter of IWG MS Judo 73Z.
- Natsuki boasts an amazing pedigree going back to the legend herself, Akiko.
- The sire stack is formidable with Virile x Kotsukari x Judo x Shigemaru x Big Al x Tamamaru x Namimaru.



RED EMPEROR • Sire of Lot 23



RAPID BAY NATSUKI ET • Dam of Lot 23



FULLBLOOD AKAUSHI • RED
HORNED

4 IVF EMBRYOS

BIG AL
RED EMPEROR (EAF82294)
DAI-HACHI 8 MARUNAMI

TWA KOTSUKARI
RAPID BAY NATSUKI ET (AF172833)
IWG MS JUDO 73Z

DAI-JU 10 MITSUMARU KO 76
AKIKO
DAI-SAN 3 MITSUMARU KO 71
DAI-HICHI 7 MARUNAMI TOK 14289
HIKARI
AKIKO
JUDO 1223
GABNI RUBI

**Guaranteed 1 pregnancy if put in by a certified technician.
Stored at Trans Ova, Fort Scott, KS.**

- Red Emperor is the sire of these elite embryos.
- Red Emperor is the internationally proven Big AI son of Dai 8 Marunami.
- Dam of the embryos is the outstanding Kotsukari daughter, Rapid Bay Natsuki!
- Natsuki boasts an amazing pedigree that traces back to the legendary Akiko.
- The sire stack is unmatched with Red Emperor x Kotsukari x Judo x Shigemaru x Big AI x Tamamaru x Namimaru.
- This could be a once in a lifetime chance at genetics like this!



THE WRIGHT WAGYU MASTER CHEF E146 • Sire of Lot 24

FULLBLOOD AKAUSHI • COW • RED
HORNED



4 IVF SEXED HEIFER EMBRYOS

TWA KAJIKARI
THE WRIGHT WAGYU MASTER CHEF E146 (EAF142713)
KALANGA SHIGEHOMARE B234

HEARTBRAND RHUBARB 2142A ET
ACE MS PRIME CUT RHUB 047 ET (AF199682)
MCC 754Y

HIKARI
UME
SHIGEMARU
KALANGA HIKAHOMARE VW36
RUESHAW 430
HEARTBRAND BARBARA B3518R
TAMAMARU
HEARTBRAND S1754P

**Guaranteed 1 pregnancy if put in by a certified technician.
Stored at Trans Ova, Sioux, Center, IA.**

- Embryos sired by the great Australian sire Master Chef. This powerful and rare pedigree has the great Ume dam on the top and bottom sides with Hikari/Ume on the sire side and Shigemaru/Ume on the dam side.
- Master Chef is the elite performing Australian sire that crosses Kajikari with Homares.
- Donor dam is a daughter of the popular Heartbrand Rhubarb.
- RHUB 047 descends directly from the elite brood cow, Ume.
- This is a powerful genetic package of Master Chef x Rhubarb x Tamamaru x Shigemaru x Ume.



FULLBLOOD AKAUSHI • BULL • RED
AF247838 • HORNED • 3/24/2022 • 7133K

HEARTBRAND 7133K ET

RUEMEI H39
RUESHAW 430
FB2 KIKUTAMA 14285

HEARTBRAND JOE S5394S
HEARTBRAND KATE 662Z
HEARTBRAND 7836W

RYUEI H20
HARUMI H376
SOCHU H10
KIKUFUJI 1627
SHIGEMARU
HEARTBRAND B0004M
HEARTBRAND C4408S
HEARTBRAND T2796R

Selling 5 Units - Stored at Trans Ova, Fort Scott, KS.

- 7133K is a son of the great Rueshaw.
- His maternal grandsire is the popular Heartbrand Joe.
- He descends from the icon Dai 8 Marunami through the famous Ringo cow.
- Check out his pedigree line of Rueshaw x Joe x Heartbrand C4408S x Tamamaru x Big Al x Ringo.
- 7133K offers a standout genetic package.



FULLBLOOD AKAUSHI • BULL • RED
FB15712/ AF6818 • HORNED • 9/14/1997 • S348

TWA KOTSUKARI

DAI-JU 10 MITSUMARU KO 76
HIKARI
KAZUTOMO 1KYU 92958

NAMIMARU KO 74
AKIKO
MITSUKO TOKKYU 9639

DAI-NI 2 MITSUMARU TOKKYU 22
GODAI KO 2739
NAMIMARU KO 74
KIKUMI TOKKYU 11875
DAI-NI 2 SHIGENAMI TOKKYU 27
DAI-NI 2 MARUHANA KO 2862
MITSUTAKE KO 58
MITSU KO 1753

Selling 1 Unit - Stored at Trans Ova, Chillicothe, MO.

- There is a limited supply of Kotsukari semen and no more is available to be imported into the USA.
- TWA Kotsukari is fast becoming a breed legend.
- He is nearly a breed original with his parentage of Hikari x Akiko.
- As an Australian bull, his semen has been hard to obtain.
- Here is a rare opportunity to invest in genetic gold.
- This straw will change your herd!

SEMEN





FULLBLOOD AKAUSHI • BULL • RED
FB29170/AF107682 • HORNED • 11/7/2016 • LAG 1105D

LAG 1105D ET

SHIGEMARU

DAI-NI 2 SHIGENAMI TOKKYU 27
DAI-YON 4 AKIBARE TOKKYU 3357

KAEDEMARU 2

TAMAMARU
KAEDEMARU

SHIGENAMI KO 48
DAI 2 TAMASHIGE KO 1842
DAI-JYUU 10 SHIGEKAWA KO 65
DAI-NI 2 AKIBARE 1KYU 53244
DAI-GO 5 TAMANAMI TOKKYU 96
DAI-HACHI 8 MARUNAMI
DAI-JU 10 MITSUMARU KO 76
DAI-SAN NAMIAMI NI



FULLBLOOD AKAUSHI • BULL • RED
FB30265/AF52168 • HORNED • 11/10/2013 • 2627A

BRADY

RUESHAW 430

RUEMEI H39
FB2 KIKUTAMA 14285

HEARTBRAND Z1118P

RUESHAW 430
AKIKO

RYUEI H20
HARUMI H376
SOCHU H10
KIKUFUJI 1627

RUEMEI H39
FB2 KIKUTAMA 14285
NAMIMARU KO 74
MITSUKO TOKKYU 9639

Selling 3 Units - Stored at Trans Ova, Chillicothe, MO.

- LAG 1105D is a special bull within the breed.
- Unique pedigree of Shigemaru x Tamamaru x Dai 10 Mitsumaru.
- His dam is the great Kaedemaru 2.
- His maternal granddam is Kaedemaru, a breed legend herself.
- 1105D brings exceptional value to any breeding program.

Selling 1 Unit - Stored at Trans Ova, Chillicothe, MO.

- Brady is a Rueshaw grandson of the famed Akiko.
- He is a double-bred Rueshaw.
- Brady is original genetics at its finest.
- He can be used on almost any donor in any herd.
- Do not miss out on this impressive genetic opportunity!





Prior to the sale
all current weights,
BW, WW and YW will be
on the supplement sheet.



HEARTBRAND PHOENIX 1398F ET • Sire of Lot 29



FULLBLOOD AKAUSHI • BULL • RED
AF272164 • HORNED • 11/9/2022 • LAG 1106K

LAG 1106K

BIG AL
HEARTBRAND PHOENIX 1398F ET
DAI-KYU 9 KOBAI 73

WSI UMEMARU
LAG 1106D ET
KAEDEMARU 2

DAI-JU 10 MITSUMARU KO 76
AKIKO
DAI-GO 5 TAMANAMI TOKKYU 96
DAI-KYU 9 KOBAI 7 TOKKYU 5662
HIKARI
KAEDEMARU
TAMAMARU
KAEDEMARU

- 1106K is a three-year-old son of Heartbrand Phoenix.
- His maternal grandsire is the respected WSI Umemaru.
- The maternal line traces directly to Kaedemaru.
- This attractive pedigree combines Kaedemaru and Kobai bloodlines.
- 1106K is ready to go!

BULL





RAPID BAY NATSUKI ET • Dam of Lot 30

FULLBLOOD AKAUSHI • BULL • RED
AF329463 • HORNED • 4/16/2024 • MPA M111

MPA RUEKO ET

- Rueko is the son of sought-after original import Rueshaw.
- He descends from the reliable Akiko maternal line.
- A great sire stack provides a high level of confidence in this young bull.
- Sire pathway of Rueshaw x Kotsukari x Judo x Shigemaru x Big Al x Tamaru.
- This bull will establish a new level of performance wherever he goes!



RUEMEI H39
RUESHAW 430
FB2 KIKUTAMA 14285

TWA KOTSUKARI
RAPID BAY NATSUKI ET
IWG MS JUDO 73Z

RYUEI H20
HARUMI H376
SOCHU H10
KIKUFUJI 1627
HIKARI
AKIKO
JUDO 1223
GABNI RUBI



TJ MS HOMARE 718B • Dam of Lot 31

BULL



FULLBLOOD AKAUSHI • BULL • RED
AF329462 • HORNED • 4/13/2024 • MPA M110

MPA 110 ET

DAI-JU 10 MITSUMARU KO 76
AKIKO
DAI-SAN 3 MITSUMARU KO 71
DAI-HICHI 7 MARUNAMI TOK 14289
DAI-JU 10 MITSUMARU KO 76
AKIKO
UKB MR SHIGEMARU/803
JVP MS HOMARE J 30E

BIG AL
RED EMPEROR
DAI-HACHI 8 MARUNAMI

BIG AL
TJ MS HOMARE 718B
UKB MS L30E

- MPA 110 is a son of the high use Red Emperor.
- Red Emperor is the internationally proven son of Dai 8 Marunami x Big Al.
- The JVP Homare line builds the bottom side of this pedigree.
- Very powerful sire stack of Red Emperor x Big Al x UKB 803 x Judo x Namimaru.
- Homare J 30E and Homare 128 provide extreme confidence in the maternal base.





JUDO 1223 • Sire of Lot 32

FULLBLOOD AKAUSHI • BULL • RED
AF329465 • HORNED • 3/20/2024 • MPA M114

MPA JUDO II ET

- MPA Judo II is a Judo son as his name indicates.
- This sire stack is a winning combination of Judo x Big Al x Rueshaw x Big Al.
- Fuyuko appears as the anchor dam in this pedigree.
- This pedigree shows predictable breeding with proven sires on Fuyuko blood.
- Here is a foundation pedigree through and through.



SHIGETAKARA H 40
JUDO 1223
SAKAE RK23331

BIG AL
LAG 2208G
HEARTBRAND RHEA 3119A ET

SHIGETAMA H 11
TAKARA 3 22765
MARUZONO F252
KAME RK4370
DAI-JU 10 MITSUMARU KO 76
AKIKO
RUESHAW 430
HEARTBRAND B1815P



FULLBLOOD WAYGU • BULL • RED
FB130774 • HORNED • 9/1/2024 • MPA M126

MPA M126 ET

SHIGEMARU
ASHWOOD PARK VIRILE
TWA MEKATA

TWA KOTSUKARI
MPA RAPID BAY NATSUKI 01D ET
IWG MS JUDO 73Z

DAI 2 SHIGENAMI
DAI YON AKIBARE 3357
HIKARI
NAMIKO
HIKARI
AKIKO
JUDO
GABNI RUBI

- M126 is a son of the Australian bull Ashwood Park Virile.
- Virile is a maternal brother to the breed-leader F X014.
- This pedigree features two great Australian sires – Virile and Kotsukari.
- The maternal line is the terrific Akiko line.
- The Australia live import female, Gabni Rubi, anchors the bottom side of the pedigree.
- Loaded sire stack of Virile x Kotsukari x Judo x Shigemaru x Big Al x Tamamaru x Namimaru.



FULLBLOOD WAYGU • BULL • RED
FB130772 • HORNED • 9/8/2024 • MPA M134

MPA M134 ET

SHIGEMARU
ASHWOOD PARK VIRILE
TWA MEKATA

TWA KOTSUKARI
MPA RAPID BAY NATSUKI 01D ET
IWG MS JUDO 73Z

DAI 2 SHIGENAMI
DAI YON AKIBARE 3357
HIKARI
NAMIKO
HIKARI
AKIKO
JUDO
GABNI RUBI

- M134 is an Ashwood Park Virile son.
- Virile is a maternal brother to the breed-leader F X014 from the Namikos.
- The maternal line of M134 is the highly regarded Akiko line.
- Unmatched sire stack of Virile x Kotsukari x Judo x Shigemaru x Big Al x Tamamaru x Namimaru.
- The maternal line is double bred to the great Akiko genetics.
- This young bull is a good as it gets anywhere!



FULLBLOOD AKAUSHI • BULL • RED
AF365505 • HORNEDED • 9/4/2024 • MPA M132

MPA 132 ET

SHIGEMARU
ASHWOOD PARK VIRILE
TWA MEKATA

TWA KOTSUKARI
RAPID BAY NATSUKI ET
IWG MS JUDO 73Z

DAI-NI 2 SHIGENAMI TOKKYU 27
DAI-YON 4 AKIBARE TOKKYU 3357
HIKARI
NAMIKO
HIKARI
AKIKO
JUDO 1223
GABNI RUBI

- MPA 132 is a son of Ashwood Park Virile, a Shigemaru grandson of the legendary Namiko.
- Virile is a maternal brother to the sensational F X014.
- Australian influence built into this pedigree with Kotsukari.
- Live Australian import female Gabni Rubi highlights the maternal line.
- The maternal line is the breed favorite Akikos.
- Loaded sires stack of Virile x Kotsukari x Judo x Shigemaru x Big Al x Tamamaru x Namimaru.



FULLBLOOD WAYGU • BULL • RED
FB130775 • HORNEDED • 9/1/2024 • MPA M125

MPA M125 ET

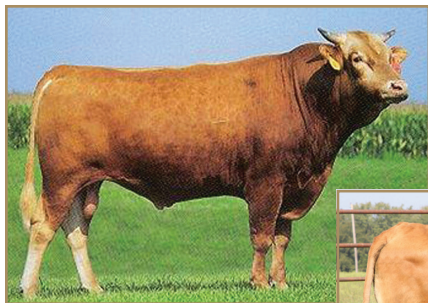
HIKARI
HEARTBRAND 518
DAI 8 MARUNAMI J19461

HB BIG AL 502
TJ MS HOMARE 718B
UKB MS L30E

DAI 10 MITSUMARU
KAZUTOMO 92958
DAI 3 MITSUMARU 30
DAI 7 MARUNAMI J14289
DAI 10 MITSUMARU
AKIKO
UKB MR SHIGEMARU/803
JVP MS HOMARE J 30E

- Son of the impressive, proven Heartbrand 518.
- 518 is a Hikari son of the legendary Dai 8 Marunami.
- Powerful and proven JVP Homare maternal line.
- Rock solid sire pathway of 518 x Big Al x UKB 803 x Judo x Namimaru.
- Great combination of Marunami, Akiko, and Homare genetics.
- These genetics will produce outstanding off spring!





TAMAMARU • Sire of Lot 37



MPA RAPID BAY NATSUKI 01D ET • Dam of Lot 37



Lot 38



FULLBLOOD WAYGU • BULL • RED
FB130776 • HORNED • 9/2/2024 • MPA M120

MPA M120 ET

TAMAMARU

DAI GO TAMANAMI 96
DAI 8 MARUNAMI J19461

MPA RAPID BAY NATSUKI 01D ET

TWA KOTSUKARI
IWG MS JUDO 73Z

TAMANAMI 70
FUJIMITSU 2030
DAI 3 MITSUMARU 30
DAI 7 MARUNAMI J14289
HIKARI
AKIKO
JUDO
GABNI RUBI

- M120 is a Tamamaru son.
- This pedigree is as good as it gets!
- Very deep, powerful pedigree.
- The maternal line is the sought-after Akiko bloodline.
- Australian import female, Gabni Rubi, highlights the pedigree.
- Sire stack of Tamamaru x Kotsukari x Judo x Shigemaru x Big Al x Tamamaru x Namimaru.
- This bull is a great one!



FULLBLOOD WAYGU • BULL • RED
FB130779 • HORNED • 9/9/2024 • MPA M136

MPA M136 ET

JUDO

SHIGETAKARA H40
SAKAE RK23331

CHR MS SHIGEMARU 693D

BALD RIDGE HENSHIN
BALD RIDGE HOMARE BLUE

SHIGETAMA H11
TAKARA 3RD RK22765
MARUZONO F252
KAME RK4370
KALANGA KAJIKARI B0125
KALANGA STARMIKO B218
KALANGA SHIGEMARU B0579
HIDDEN VALE OHV45

- M136 is a Judo son.
- Pedigree has tons of Australian influence.
- Foundation is the JVP Homare line which is highly proven.
- Incredibly deep pedigree.
- Sires in the pedigree include Judo, Henshin, Hikari, and top Australian bulls.
- Wealth of great Akaushi genetics in this bull's lineage.



MPA RAPID BAY NATSUKI 01D ET • Dam of Lot 39

FULLBLOOD WAYGU • BULL • RED
 FB130767 • HORNEDED • 8/22/2024 • MPA M123

MPA M123 ET

- M123 is a son of the foundation sire Tamamaru.
- The maternal bloodline is the highly proven Akikos.
- Pedigree exudes proven, predictable performance.
- Beautiful line-up of Tamamaru x Kotsukari x Judo x Shigemaru x Big Al x Namimaru.



DAI GO TAMANAMI 96
TAMAMARU
 DAI 8 MARUNAMI J19461

TWA KOTSUKARI
MPA RAPID BAY NATSUKI 01D ET
 IWG MS JUDO 73Z

TAMANAMI 70
 FUJIMITSU 2030
 DAI 3 MITSUMARU 30
 DAI 7 MARUNAMI J14289
 HIKARI
 AKIKO
 JUDO
 GABNI RUBI



FULLBLOOD WAYGU • BULL • RED
FB130768 • HORNED • 4/17/2024 • MPA M1

MPA M1 ET

HIKARI

DAI 10 MITSUMARU
KAZUTOMO 92958

HB BIG AL 502
TJ MS HOMARE 718B
UKB MS L30E

DAI 2 MITSUMARU
GODAI
NAMIMARU
KUMI

DAI 10 MITSUMARU
AKIKO
UKB MR SHIGEMARU/803
JVP MS HOMARE J 30E

- Terrific son of the foundation sire Hikari.
- Hikari has made the great ones.
- Rock solid sire stack of Hikari x Big Al x UKB 803 x Judo x Namimaru.
- Maternal line is the highly proven JVP Homares.
- This M1 bull has the goods to produce excellent offspring.
- Invest in the future of your herd with the great young bull!



FULLBLOOD WAYGU • BULL • RED
FB130780 • HORNED • 4/20/2024 • MPA M3

MPA M3 ET

HIKARI

DAI 10 MITSUMARU
KAZUTOMO 92958

HB BIG AL 502
TJ MS HOMARE 718B
UKB MS L30E

DAI 2 MITSUMARU
GODAI
NAMIMARU
KUMI

DAI 10 MITSUMARU
AKIKO
UKB MR SHIGEMARU/803
JVP MS HOMARE J 30E

- M3 is a son of the foundation sire Hikari.
- Hikari has made some great ones!
- The maternal line foundation is the performance proven JVP Homares.
- Powerful sire stack of Hikari x Big Al x UKB 803 x Judo x Namimaru.
- Akiko appears in this pedigree through her son Big Al as the maternal grandsire.
- This genetic package in this bull will improve any breeding program!



This auction is the next step in Midwest Prime Akaushi's journey to being a leading seedstock producer, and will expand our cattle to a larger market. We are joining our forces with Live-Ag and Wagyu365 to continue to build the market for Akaushi genetics.



Mark Byler, 816.649.8272 • Jason Miller, 740.541.7475
3295 Northeast State Highway D • Weatherby, MO 64497
info@midwestprimeakaushi.com • www.midwestprimeakaushi.com